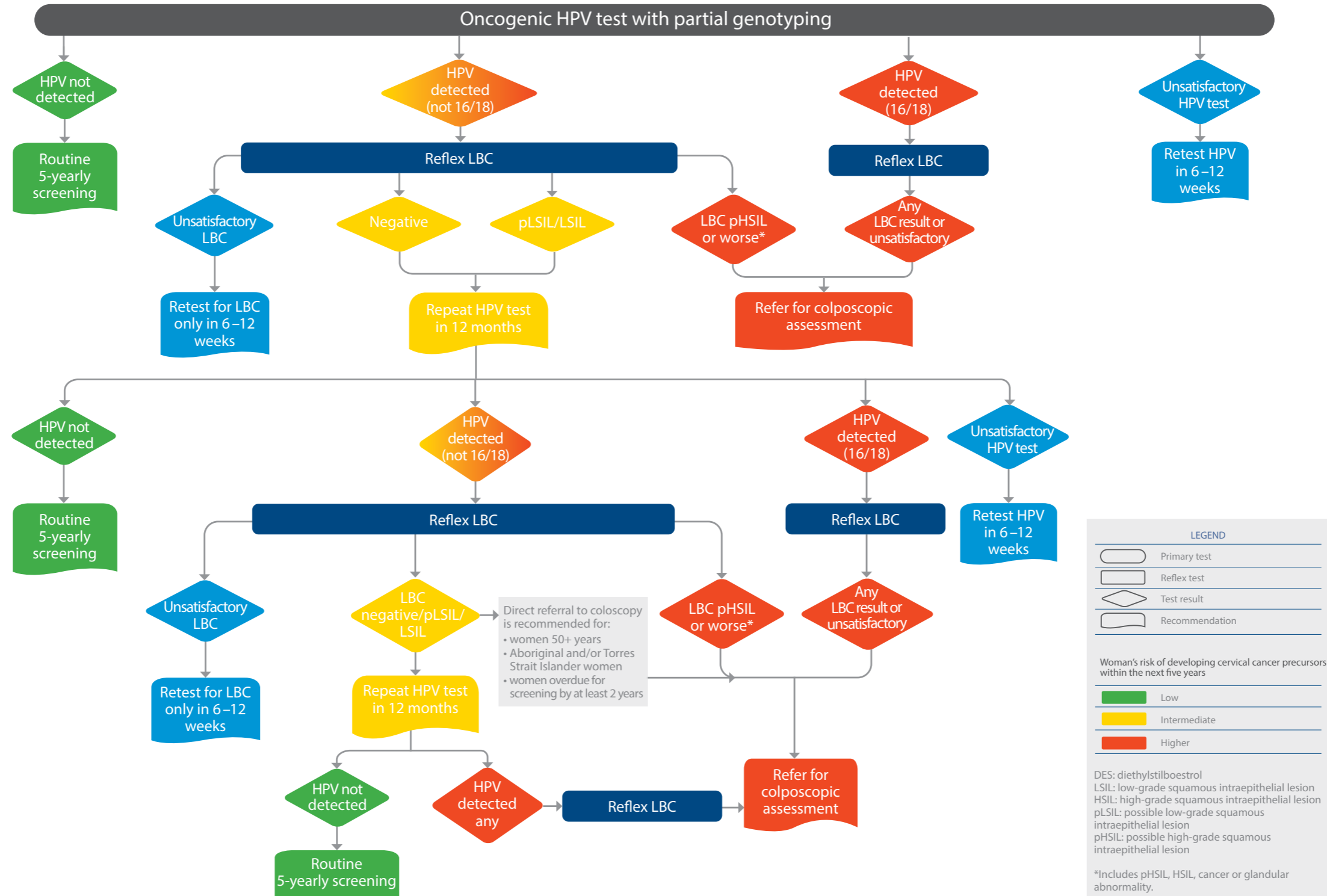




Cervical Screening Flowcharts

From 1st February 2021 the updated National Cervical Screening Guidelines took effect

CERVICAL SCREENING PATHWAY FOR PRIMARY ONCOGENIC HPV TESTING

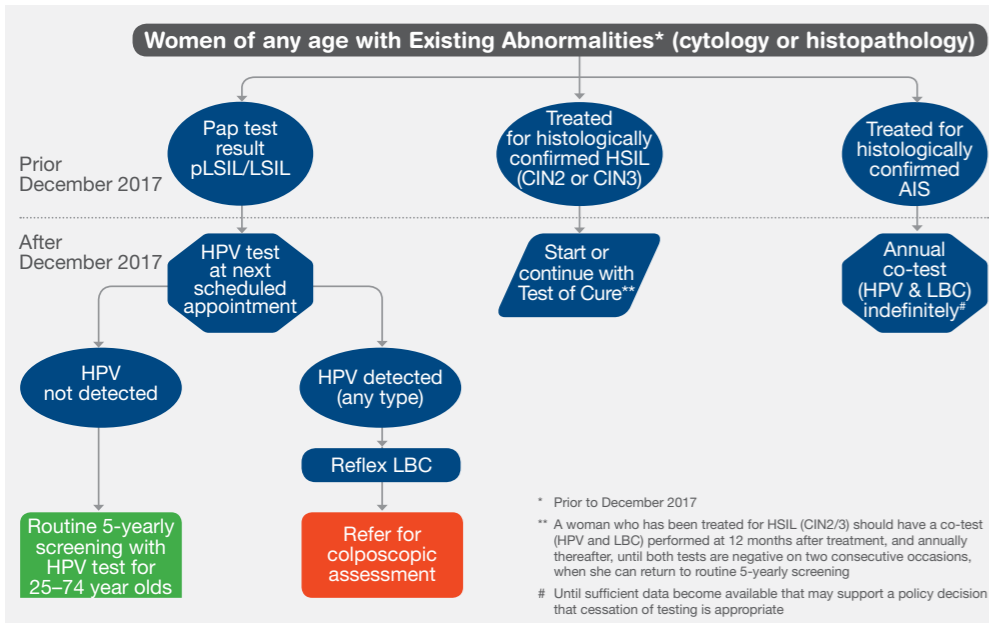


Source: National Cervical Screening Program: Guidelines for the management of screen-detected abnormalities, screening in specific populations and investigation of abnormal vaginal bleeding. CCA 2016. Accessible from <https://www.health.gov.au/news/important-changes-to-the-national-cervical-screening-programs-clinical-guidelines-pathway-for-women-at-intermediate-risk>.

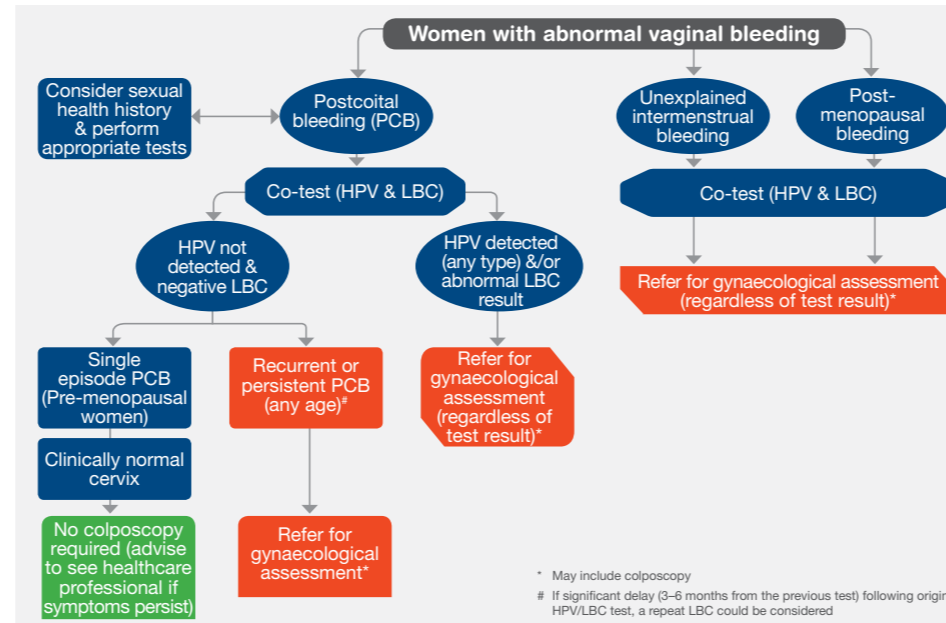
Cervical Screening Flowcharts



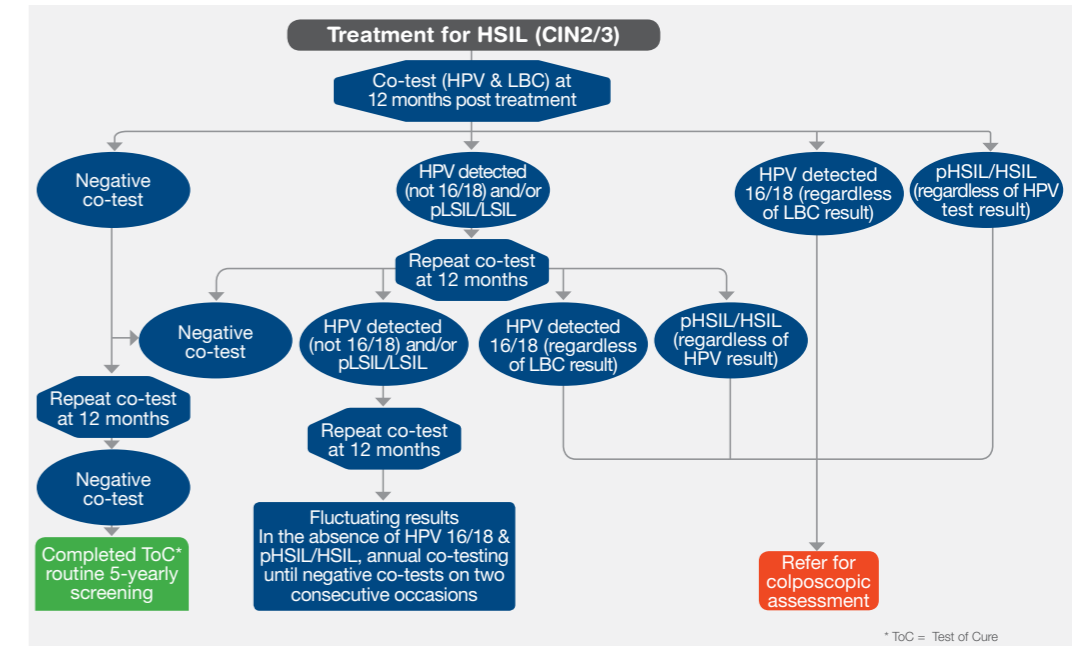
TRANSITION TO THE RENEWED NATIONAL CERVICAL SCREENING PROGRAM



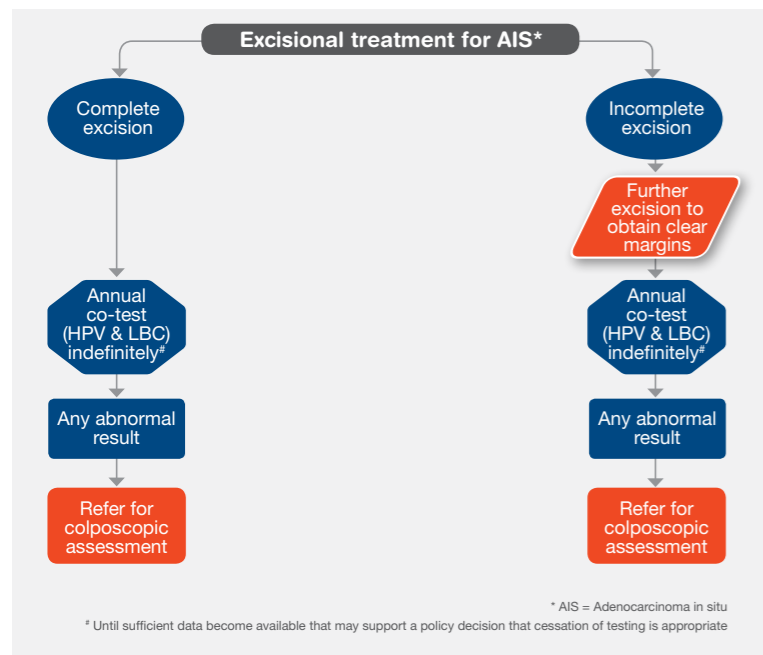
INVESTIGATION OF WOMEN WITH ABNORMAL VAGINAL BLEEDING



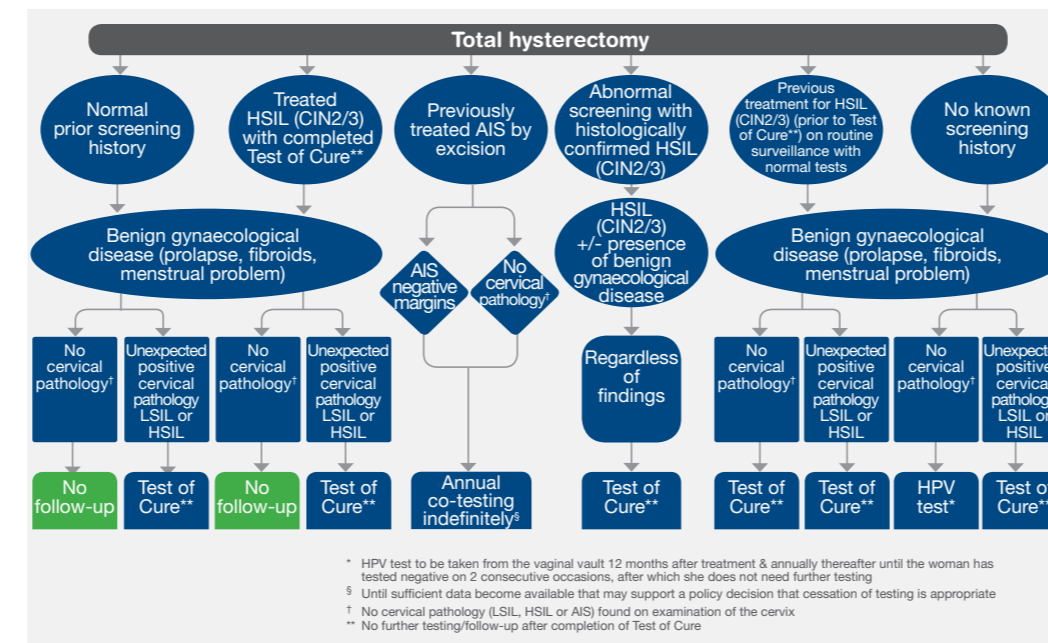
TEST OF CURE FOLLOWING TREATMENT FOR HIGH-GRADE SQUAMOUS ABNORMALITIES



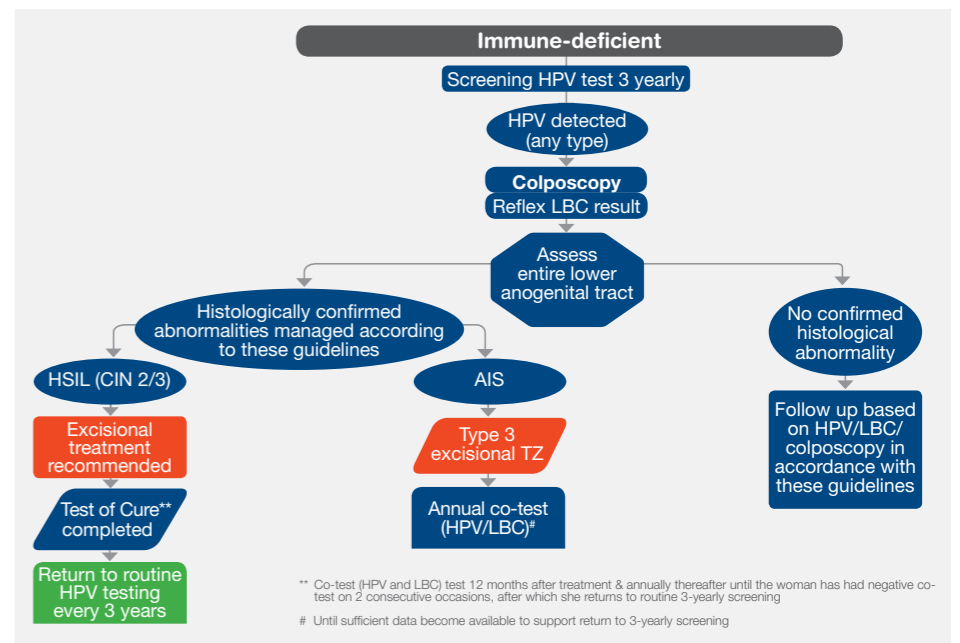
FOLLOW UP AFTER EXCISIONAL TREATMENT FOR AIS



VAGINAL SCREENING AFTER TOTAL HYSTERECTOMY



MANAGEMENT OF SCREEN DETECTED ABNORMALITIES IN IMMUNE-DEFICIENT WOMEN



Source: National Cervical Screening Program: Guidelines for the management of screen-detected abnormalities, screening in specific populations and investigation of abnormal vaginal bleeding. Cancer Council Australia, Sydney (2016)